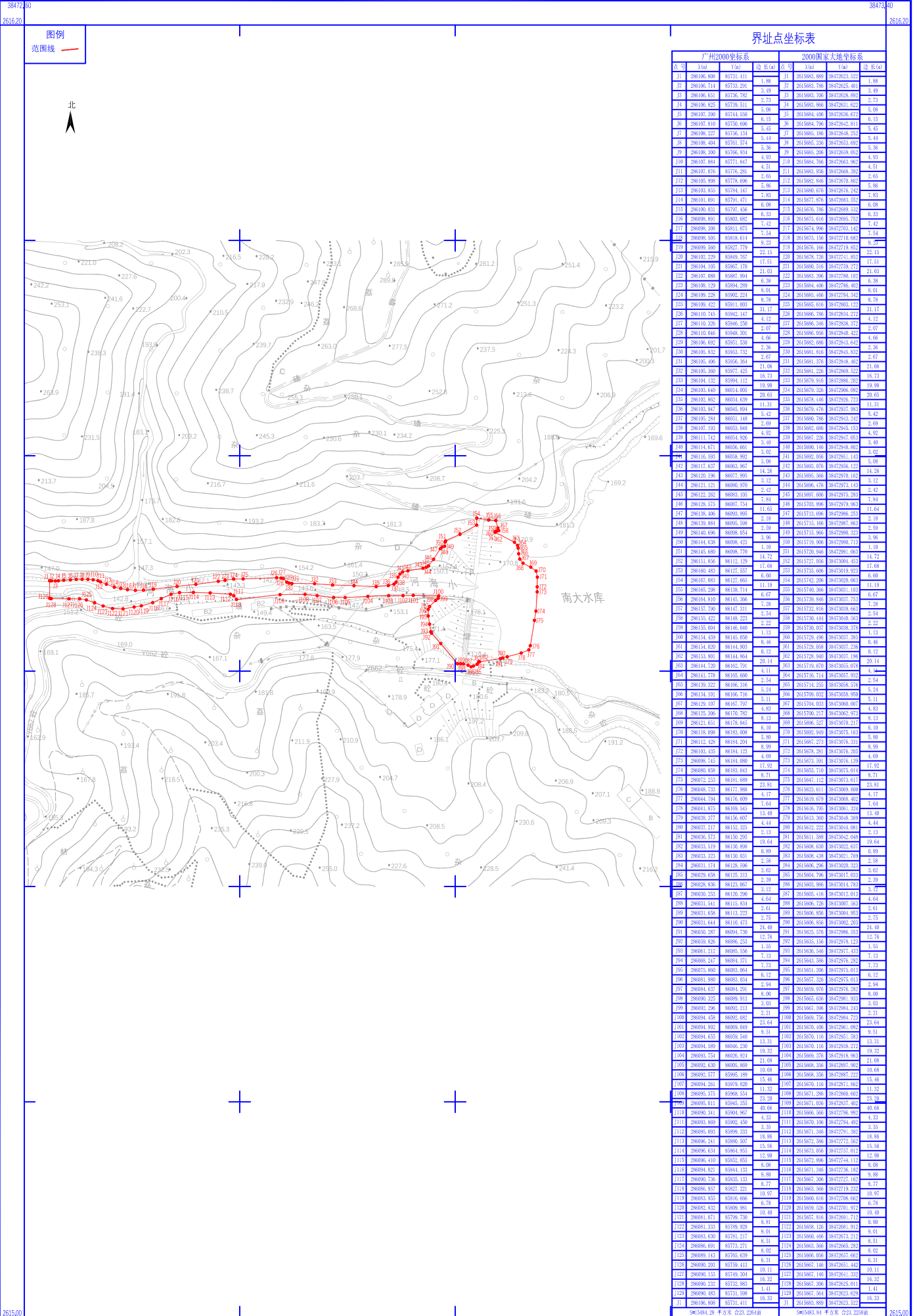


公示图



界址点坐标表

点号	广州2000坐标系			2000国家大地坐标系		
	X(m)	Y(m)	Z(m)	X(m)	Y(m)	Z(m)
1	38106.808	83731.411	1.88	3019883.889	3472925.529	1.88
2	38106.714	83733.291	1.88	3019883.788	3472925.441	1.88
3	38106.631	83735.192	1.89	3019883.708	3472925.388	1.89
4	38106.625	83739.511	2.73	3019883.906	3472931.621	2.73
5	38107.090	83744.638	3.08	3019884.406	3472936.671	3.08
6	38107.810	83750.006	6.13	3019884.790	3472942.811	6.13
7	38108.227	83756.134	5.44	3019885.198	3472948.222	5.44
8	38108.404	83761.574	5.36	3019885.330	3472953.692	5.36
9	38108.300	83766.934	4.91	3019885.208	3472959.052	4.91
10	38107.894	83771.947	4.51	3019884.790	3472963.988	4.51
11	38107.407	83776.291	4.51	3019883.828	3472968.388	4.51
12	38105.988	83778.696	2.63	3019883.846	3472970.888	2.63
13	38104.835	83784.147	3.86	3019880.676	3472980.241	3.86
14	38101.891	83791.471	7.83	3019877.476	3472983.551	7.83
15	38100.401	83797.436	6.08	3019876.198	3472989.521	6.08
16	38098.891	83803.683	6.33	3019873.616	3472993.732	6.33
17	38098.208	83811.075	1.54	3019874.996	3472993.142	1.54
18	38098.506	83818.614	9.23	3019873.196	3472997.692	9.23
19	38099.690	83827.179	22.13	3019876.196	3472998.822	22.13
20	38100.298	83836.767	11.51	3019880.616	3472999.722	11.51
21	38107.088	83847.941	21.03	3019883.296	3472999.122	21.03
22	38108.129	83894.289	6.38	3019884.406	3472996.481	6.38
23	38109.228	83920.221	8.01	3019885.466	3472994.341	8.01
24	38109.422	83911.003	6.78	3019885.616	3472993.121	6.78
25	38110.145	83942.147	14.12	3019888.798	3472981.272	14.12
26	38110.236	83946.250	2.07	3019888.346	3472983.322	2.07
27	38110.146	83948.201	4.66	3019888.056	3472984.422	4.66
28	38109.692	83951.538	2.38	3019882.888	3472983.642	2.38
29	38105.906	83959.752	2.67	3019881.406	3472983.822	2.67
30	38105.406	83964.244	11.03	3019880.616	3472983.122	11.03
31	38105.300	83977.425	21.06	3019881.228	3472983.522	21.06
32	38104.132	83994.112	16.73	3019875.816	3472986.222	16.73
33	38103.640	84014.005	18.90	3019879.828	3472986.082	18.90
34	38102.802	84014.839	20.63	3019878.446	3472983.722	20.63
35	38102.847	84045.894	3.52	3019878.476	3472991.692	3.52
36	38105.294	84053.148	2.69	3019880.798	3472993.222	2.69
37	38107.130	84053.048	4.93	3019882.988	3472993.122	4.93
38	38111.742	84054.506	3.40	3019882.228	3472991.072	3.40
39	38114.671	84056.499	3.00	3019890.146	3472993.822	3.00
40	38116.298	84068.767	5.09	3019890.616	3472993.122	5.09
41	38117.837	84083.967	14.26	3019893.076	3472993.122	14.26
42	38120.196	84087.896	3.12	3019895.566	3472993.122	3.12
43	38121.121	84080.900	2.42	3019896.476	3472992.142	2.42
44	38122.262	84083.105	7.93	3019895.606	3472993.282	7.93
45	38126.575	84087.754	11.63	3019897.896	3472993.962	11.63
46	38138.406	84093.095	2.18	3019911.664	3472998.222	2.18
47	38139.894	84095.248	2.59	3019913.496	3472991.822	2.59
48	38140.696	84098.054	3.96	3019913.966	3472998.322	3.96
49	38141.638	84098.425	1.10	3019913.906	3472998.122	1.10
50	38145.988	84098.776	14.73	3019920.628	3472998.082	14.73
51	38151.856	84112.129	17.68	3019922.056	3472998.422	17.68
52	38160.483	84127.357	6.00	3019923.626	3472993.922	6.00
53	38167.083	84127.665	11.18	3019924.206	3472993.082	11.18
54	38165.298	84138.714	11.18	3019924.366	3472993.112	11.18
55	38164.810	84145.906	6.62	3019929.496	3472993.722	6.62
56	38163.901	84144.964	0.12	3019929.426	3472993.122	0.12
57	38167.730	84147.211	9.54	3019929.816	3472993.692	9.54
58	38165.422	84148.223	2.22	3019930.444	3472993.522	2.22
59	38165.904	84146.940	1.13	3019930.052	3472993.122	1.13
60	38164.008	84146.808	6.16	3019929.496	3472993.642	6.16
61	38163.455	84144.124	6.99	3019929.426	3472993.122	6.99
62	38163.901	84144.964	0.12	3019929.426	3472993.122	0.12
63	38164.720	84162.701	20.41	3019929.676	3472993.222	20.41
64	38161.178	84165.600	4.11	3019929.714	3472993.922	4.11
65	38163.222	84166.516	2.24	3019929.556	3472993.522	2.24
66	38164.101	84166.716	5.24	3019929.022	3472993.922	5.24
67	38163.107	84167.707	4.52	3019929.056	3472993.072	4.52
68	38165.206	84170.782	8.13	3019929.212	3472993.922	8.13
69	38162.851	84176.045	6.10	3019929.322	3472993.212	6.10
70	38163.808	84181.008	5.80	3019929.496	3472993.122	5.80
71	38162.428	84184.204	6.99	3019929.272	3472993.222	6.99
72	38163.455	84184.124	6.99	3019929.426	3472993.122	6.99
73	381608.745	84184.988	4.69	3019929.292	3472993.122	4.69
74	381608.838	84183.043	17.92	3019935.716	3472993.012	17.92
75	381602.233	84181.889	8.71	3019944.112	3472993.642	8.71
76	381608.733	84177.988	23.87	3019928.611	3472993.882	23.87
77	38164.794	84176.609	7.54	3019929.676	3472998.492	7.54
78	38164.875	84169.545	12.40	3019928.792	3472993.122	12.40
79	38163.277	84156.607	4.44	3019929.300	3472998.202	4.44
80	38163.277	84152.225	2.13	3019922.222	3472994.001	2.13
81	38163.673	84150.255	19.64	3019911.888	3472992.500	19.64
82	38163.519	84138.888	0.89	3019929.426	3472993.642	0.89
83	38163.033	84130.031	2.58	3019929.426	3472993.722	2.58
84	38163.171	84128.036	3.62	3019929.256	3472993.122	3.62
85	38163.038	84125.313	3.62	3019929.796	3472993.022	3.62
86	381628.836	84123.061	2.20	3019929.388	3472993.122	2.20
87	381630.233	84120.900	4.44	3019929.416	3472993.012	4.44
88	38163.541	84115.834	2.61	3019929.728	3472997.582	2.61
89	381631.838	84113.223	2.75	3019929.856	3472999.952	2.75
90	381631.844	84110.472	24.40	3019929.856	3472998.202	24.40
91	381630.290	84094.730	12.76	3019929.676	3472998.222	12.76
92	381629.838	84088.253	1.55	3019929.426	3472993.122	1.55
93	381631.217	84088.526	7.13	3019929.546	3472993.122	7.13
94	381628.247	84084.321	7.13	3019941.288	3472993.222	7.13
95	381625.960	84083.064	1.73	3019945.206	3472993.012	1.73
96	3816281.880	84083.064	6.12	3019952.328	3472993.012	6.12
97	381628.477	84084.291	2.24	3019959.976	3472993.202	2.24
98	381630.233	84089.013	16.90	3019963.636	3472998.922	16.90
99	381629.296	84092.213	2.21	3019962.956	3472994.242	2.21
100	381629.458	84092.882	23.64	3019969.756	3472994.722	23.64
101	381629.492	84089.049	6.51	3019976.408	3472998.092	6.51
102	381629.838	84088.540	13.31	3019976.116	3472993.222	13.31
103	381629.838	84088.540	1.55	3019976.546	3472993.122	1.55
104	381629.751	84088.924	19.32	3019976.272	3472993.988	19.32
105	381629.630	84095.869	21.00	3019968.356	3472981.988	21.00
106	381629.677	84095.189	10.60	3019969.356	3472987.222	10.60
107	381629.281	84095.820	11.18	3019969.116	3472981.882	11.18
108	381629.373	84098.514	23.20	3019971.288	3472986.602	23.20
109	381629.011	84095.255	10.69	3019971.036	3472987.482	10.69
110	381629.341	84094.907	4.53	3019966.956	3472986.962	4.53
111	3816281.869	84092.430	3.35	3019970.108	3472984.892	3.35
112	381629.898	84099.233	18.86	3019971.240	3472983.222	18.86
113	381629.241	84098.259	15.59	3019973.496	3472983.122	15.59
114	381629.634	84084.953	12.90	3019973.856	3472983.012	12.90
115	381629.610	84083.035	8.08	3019973.856	3472983.142	8.08
116	381629.821	84084.133	8.08	3019971.946	3472983.142	8.08
117	381629.736	84083.133	6.38	3019962.308	3472983.142	6.38
118	381629.857	84082.221	10.52	3019963.366	3472983.222	10.52
119	381629.355	84086.066	6.75	3019960.616	3472983.482	6.75
120	381629.832	84089.881	10.40	3019959.328	3472983.922	10.40
121	3816281.071	84079.730	9.81	3019952.816	3472983.712	9.81
122	3816291.333	84078.528	1.01	3019959.428	3472983.912	1.01
123	3816288.838	84078.217	18.32	3019960.440	3472983.122	18.32
124	3816288.891	84077.271	6.51	3019963.566	3472983.222	6.51
125	3816288.143	84076.639	8.02	3019966.856	3472983.642	8.02
126	3816290.203	84079.413	6.31	3019962.146	3472983.442	6.31
127	3816290.133	84079.401	10.11	3019962.146	3472983.122	10.11
128	3816290.232	84078.981	18.32	3019963.306	3472983.012	18.32
129	3816290.483	84073.088	16.32	3019967.564	3472983.692	16.32
130	3816290.808	84073.411	16.32	3019983.888	3472983.522	16.32